



FRANCISCAN NEWSLETTER

Volume 1, No. 3 & No. 4

January - June 1995

Embossed Hand- Painted Earthenware

Ever wonder why you can't find that elusive Franciscan Apple long & narrow? How about the Forget-me-not teapot and covered casserole. Ready to pull your hair out because "you've heard someone had Apple ceramic goblets"?

You are not alone in the search. Sorry to say, though, there is not an Apple long & narrow. The Apple ceramic goblets do not exist. I've heard random stories of the Forget-me-not teapot and covered casserole. Someone has one, but being the Nebraskan that I was reared, I won't believe it until I see it. Many people have promised pictures. I have yet to see them. Questioned further, I have found them only to be wishes, which we all have so often.

In 1976, Franciscan put out the 2-1/2 quart covered casserole, footed ceramic goblet, and long & narrow, 15." However, these were only offered in Desert Rose. They were never made in Apple.

In 1977, the bud vase was made in Desert Rose and Meadow Rose. Meadow Rose was also offered with the ceramic goblet, 2-1/2 qt covered casserole and the long & narrow. Considering the bud vase was the same shape as the ceramic salt & pepper mill, heaven knows why an Apple bud vase was not made. Slap a bottom on the mill and you have a bud vase. Micro-wave cookware sets consisting of the square snack plate, square baker and rectangular baker were added in 1978. The micro-wave sets were available in Apple, Desert Rose, Meadow Rose, and October. Forget-me-not, Strawberry Fair/Time, Fresh Fruit, and Bountiful were added later when the sets were introduced.

With the sale of Franciscan Ceramics, Inc. from Interpace

(Continued on page 11)



United States Presidential China

Franciscan made two sets of presidential china. One set was made for Richard M. Nixon for the Presidential yacht. Another set was made for John F. Kennedy for Air Force One. Unfortunately it is not documented which set was made for which president. The above set is rimmed in cobalt blue with platinum seals and lining. The other set is in white with gold seals and lining.

Volume two and volume three were combined into this double issue due to various delays. The first volume is now complete and it is time to subscribe for the second volume. The first volume is limited and after July, 1995, no further copies will be included with new subscriptions. Now is the time to share the newsletter with friends and relatives. Subscriptions are \$20 and include membership in the Franciscan Collectors Club, U.S.A.



Franciscan Collectors Club, U.S.A.
Franciscan Newsletter
8412 - 5th Avenue N.E.
Seattle, WA 98115

Chats by James Elliot

Finally, here is the third issue of the Franciscan Newsletter. A lot of changes have occurred in my life. A new apartment is in my life. A drastic change from the three bedroom house I was living in. The apartment is closer to an area of Seattle I prefer. Not far from Capital Hill's Broadway street, the hustle & bustle of this favorite shopping area. Downtown is close with the Seattle Center. This is where the "Space Needle" is - and we wonder about Franciscan Starburst & Oasis. The famous Pike Place Market is at hand for ample fresh produce shopping. Apples are a Washington State pride & joy.

However, with all this beauty at hand, there is the problem of house to apartment. The biggest stress is what does one do with 19 sets of Franciscan Dinnerware. The apartment kitchen is the size of a closet and the dining room has no space for a hutch. Rental space in Seattle is a fortune, especially toward the metro-downtown areas. I am lucky to have a dining area. Back to the problem of choice. First, go from eight or twelve place setting to four. No more duplicate, just in case it breaks pieces. I once was terrified of living in the "earthquake" zone, so my set of Ivy got up to 32 cups & saucers for just in case. No more 24 tumblers. I thought this change would be easier. The furniture was easy - leave it. The papers from high school were easy - toss them. The cookoo clock - guess what - who cares. But the Franciscan! Wildflower, Twilight Rose, Fresh Fruit, Small Fruit, October Strawberry Time and Fair. Patterns were wirling around in my head. I only have room for two patterns, one for good and one for everyday. Oh, Oh. What about the Padua. Thank goodness I can enjoy these patterns in the shop, even though taking them from the shop to home is too big of a task to do.

The decision was finally made. The Wildflower would be my everyday set. The apartment is a vintage Tudor style from the 30's. Wildflower, though rare, is so wonderfully cheerful. Since the prices have skyrocketed, no more pieces will be added. As far as the fear of an earthquake, I'll buy something different if and when it happens. A friend of mine always commented that when it will happen, it will be so major that you'll be glad that only the dishes were broken. Enjoy life now is my motto.

Now the second set hinders on my mind. I have a little Apple for the kitchen. No kitchen is complete without a set of mixing bowls. There is always room for an apple Apple marmalade. A tea set in Small Fruit is a must. The teapot is one of my favorite pieces of Franciscan. The Poppy is almost all gone. This is a great choice for someone who loves Wildflower, but can't justify the cost or find it available. Still no true decision has been made for another set.

The Franciscan Artware is another problem. What to do with over 40 pieces of Oxblood. I always think of the 14 years of collecting it. Many days were made by the finding of Oxblood. The Franciscan Montebello, same shapes of Oxblood but a glaze marketed by Gladding McBean in what could be described as sky blue, were to move into the apartment. The color goes perfectly with two paintings in the living room.

Madiera, Hacienda Gold, and Hacienda Green outsold all Hand-Painted lines during the 1970's. Perfect for the Avocado and Harvest Gold kitchens & eating area's. It was more expensive too!

The house was decorated for the Oxblood. I took a piece to the decorator and said - "match this." The living room was spectacular in fine hues of oxblood, blue and green. For now, in the apartment, the decorator has chosen muslin and off-whites to compliment the feel of the area. In the mornings you can hear the buzz of water planes and the whistles of boats - I'm only a block from Lake Union. Now I understand when someone walks into the shop and says "I hate to part with these dishes but we're moving from a house to a condo." Tough decisions, but there is always that new item you must have.

Well, life has been busy. Always something. However, in this issue you will find a very good resource for finding the year a certain pattern of dinnerware or artware was introduced. One of the most frustrating problems I have had over the years was easily finding this information. There are three major resources to find this information. However, in one reference, the patterns are listed in date order. You have to scan the whole chapter to find one pattern. The hours I have spent! Hopefully you will find this a handy resource.

In February, I had the wonderful experience of visiting the Gladding McBean plant in Lincoln, California. Bill Wyatt, the plant Historian and Albert Medal, with great patience, spent 3 hours letting me see the original molds and the process of making terra cotta with methods not changed in the last century. Gladding McBean is now reissuing reproductions of their world famous terra cotta garden ware using the original molds. Bill Wyatt has done a wonderful job of preserving what he can with the resources afforded to him.

Also, I had the wonderful opportunity to do research in the California State Library. Gary Kurtz, the author of Gladding McBean Terra Cotta, took time out of his busy schedule to let me browse through a few of the 10,000 glass plate slides that were donated to the Library by Pacific Coast Building Products, the parent company of Gladding McBean. The history of the plant and it's preservation is very critical at this time. So soon, much sooner than we all like, the past fades into memory. The library has printed only a few of the glass plates. Money, as we all know is scarce. The Library is well worth a visit if you are ever in Sacramento. Unfortunately at this time, plant tours are not available, however when I hear they are, you will be the first to know.

Thank you again George James for all,

Until next time,

*James Elliot, Editor
Franciscan Newsletter*

Marks on Franciscan Ware The Lingo and Jargon of Collectors



1.



2.



3.

All collectors have developed their own language to describe the marks on Franciscan. The following marks all have been called many things by many collectors. Many collectors like to complete their sets, whether Desert Rose, Apple, Ivy, or Starburst, either by year produced or by the mark. There are many Franciscan Ivy "half-moon" collectors. What is a "half-moon?"

This is mark number 8 below. Many dealers and traders are confused by this request. Hence, here in print for the first time are labels that all Franciscan collectors, dealers and traders can use.

Mark no. 1 is the "Tropico Mark. Used a short time after Gladding McBean acquired Tropico Potteries of Los Angeles. This can be dated anywhere from 1923 when Tropico produced kitchenware and vaseware to 1934 when Gladding McBean acquired the plant. Gladding McBean thereafter ceased using the mark and replaced it with mark no. 2. Mark no. 2 is referred to as the "G.M.C.B." or "G.M.B" mark. Found on artware, dinnerware, kitchenware and vaseware from 1934 to about 1942. Mark no. 3 is known as the "F in the box" mark. Used

from 1938 to 1939 on artware, kitchenware and dinnerware. Mark no. 4, the "small Franciscan Ware round mark" is found on pieces from 1940 to 1947 as well as mark no. 5, "round Franciscan Ware." Mark no. 6, the "Oven-Safe" mark was used from 1953 to 58. Mark no. 7, the "TV Screen" is from 1958 thru 1971. This mark appears in various forms with Gladding McBean being removed in 1962 and replaced with Interpace. Not all "TV Screens" are the same as it was used for over 12 years. Mark no.87 used 1947 to 1949 is referred to as the "Round mark with Hand Decorated on the top and bottom." Mark no. 9 used from 1949 to 1953 is the "half-

moon." Mark no. 10 used 1974-1975 is the "Mission" mark. The most fun one of course, is mark no. 11, The "Flying "F" mark. This mark was derived from the "F" on Franciscan beginning in 1975 but was used solely as a mark after 1979. Now, when you are looking for a particular mark, we all will have a common understanding of what mark we are speaking about.

Mark: Known As:

1. Tropico
2. G.M.C.B. or G.M.B.
3. The "F" in the box.
4. Small round Franciscan Ware
5. Round Franciscan Ware
6. Oven-Safe
7. T.V.
8. Round Hand Decorated top & bottom.
9. Half-moon.
10. Mission.
11. Flying "F"

Questions or comments? Write the Franciscan Newsletter. Most ideas or suggestions for the direction of the newsletter comes from you, the subscriber. This article was suggested by an idea from a conversation with Steve Berch of California. He said "does it have a flying "f." I inquired what a "flying "f" was and hence the birth of this article. Over the years, all collectors have developed the new field of Franciscan collecting.



4.



5.



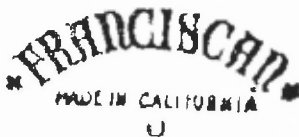
6.



7.



17



9.



10.



11.

Franciscan Patterns/Lines 1934-1990

Franciscan developed and marketed numerous patterns of dinnerware and artware. A pattern was known as a line. Such as Fruit was the 1400 line. This is what is known as "small fruit" today. Fruit was also a 2200 line. This was on the hacienda shape which is usually seen used as Hacienda, or Hacienda Green. Franciscan used the hacienda shape and hand brushed large fruit on the earthenware. There is another pattern, Fruit tableware from 1938 on the Montecito shape using a blue decal of fruit on a blue glazed background. Sometimes, a name was used for multiple patterns/lines such as "Mesa." Mesa is a masterpiece china as well as a stoneware.

The following is a listing of Franciscan dinnerware/artware patterns and lines introduced beginning in 1934. The pattern/line is followed by the category of dinnerware and then by the year the pattern/line was introduced. In compiling this list, the most reasonable date was used when two or more years were quoted by different sources.

All shapes/lines/patterns are in categories assigned by Franciscan. The franciscan category is the same as the later category of earthenware assigned by the company. If the pattern was issued in England, this was noted by using "english or England." There are 468 dinnerware/artware patterns including 163 china patterns, 147 franciscan/earthenware patterns, and 158 other dinnerware/artware patterns and lines.



The Four Fruits

Left to Right: Fresh Fruit salad plate (1980), Fruit salad plate (1963), Fruit Table Ware platter (1938) and Fruit lunch plate (1948.) Fruit is also known as small fruit, or dela robia (banded or rimmed) fruit.

2200 Shape	franciscan	1963	Blossom Time	masterpiece china	1946	Catalina Art Ware	catalina	1937
2600 line	earthenware	1973	Blue Fancy	whitestone	1963	Celadon		
2700 line	earthenware	1973	Blue Jessamine	masterpiece china	1943	(Flambeau)	masterpiece china	1952
7000 Shape	masterpiece china	1966	Blue Ribbon			Chalice	masterpiece china	1967
7700 Line	masterpiece china	1973	(Lattitudes)	earthenware	1979	Chelan	masterpiece china	1950
Abstract	gourmet	1972	Bluebell			Cherokee Rose		
Acacia (yel trim)	masterpiece china	1958	(Greenhouse)	earthenware	1975	Gold	masterpiece china	1942
Alpine Meadow	earthenware	1978	Blueberry	earthenware	1976	Cherokee Rose		
Amapola	earthenware	1973	Bountiful	earthenware	1983	Green	masterpiece china	1941
Angeleno Art Ware	catalina	1942	Bouquet	earthenware	1980	Cherokee Rose		
Antigua	whitestone	1966	Breakfast Sets	masterpiece china	1949	Palomino	masterpiece china	1941
Antique Green	masterpiece china	1966	Brentwood	masterpiece china	1956	Chestnut Weave	earthenware	1978
Apache	ind. stoneware	1972	Brown Eyes	whitestone	1966	Chinese Yellow	masterpiece china	1946
Apple	franciscan	1940	Brush	gourmet	1972	Cielito Art Ware	franciscan	1934
Appleton	masterpiece china	1952	Cafe Royal	earthenware	1981	Cimarron	masterpiece china	1949
Applique	masterpiece china	1968	California Manor	masterpiece china	1947	Cimmaron	stoneware	1971
Arabesque	masterpiece china	1959	California Poppy	franciscan	1950	Circles	gourmet	1972
Aragon	masterpiece china	1952	California Rose	masterpiece china	1949	Claremont	masterpiece china	1952
Arcadia Blue	masterpiece china	1941	California Wheat	masterpiece china	1947	Classic	regal china	1964
Arcadia Cobalt	masterpiece china	1942	California Wheat	masterpiece china	1956	Cloud Nine	whitestone	1960
Arcadia Gold	masterpiece china	1941	Calypso	earthenware	1978	Cobalt	masterpiece china	1946
Arcadia Green	masterpiece china	1941	Calypso (Lattitudes)	earthenware	1979	Conch		
Arcadia Maroon	masterpiece china	1941	Camellia (Pink blush)			(Sea Sculptures)	sculptures	1978
Arden	masterpiece china	1941	Floral Sculptures	sculptures	1978	Concinero	franciscan	1934
Ariel	masterpiece china	1971	Cameo	masterpiece china	1959	Concord	masterpiece china	1952
Aurora Art Ware	catalina	1937	Cameo Pink	masterpiece china	1948	Constantine	masterpiece china	1967
Autumn	franciscan	1955	Camisole (sampler)	earthenware	1979	Contours Art Ware	masterpiece china	1955
Avalon Table Ware	catalina	1937	Cane	ind. ironstone	1972	Corinthian	masterpiece china	1961
Balboa	masterpiece china	1942	Cantata	whitestone	1965	Coronado Art Ware	franciscan	1935
Ballet	masterpiece china	1956	Canton	masterpiece china	1950	Coronado Table		
Betsy	stoneware	1983	Capistrano Art Ware	franciscan	1936	Ware	franciscan	1936
Beverly	masterpiece china	1941	Capri	cosmopolitan	1959	Cortina	cosmopolitan	1960
Beverly Cobalt	masterpiece china	1942	Carmel	masterpiece china	1952			
Birchbark	masterpiece china	1952	Carmel (Turquoise)	masterpiece china	1942			
Bird 'n Hand	whitestone	1968	Castile	masterpiece china	1971			

(Continued on page 5)

(Continued from page 4)

Cosmopolitan China							
(NTK Japan)	cosmopolitan	1959					
Country Craft	earthenware	1981	Flair Shape	franciscan	1954	Kachina	ind. stoneware 1972
Country French	earthenware	1978	Flair White	franciscan	1954	Kaleidoscope	earthenware 1978
Creation (Midwinter)	stoneware england	1987	Flame	ind. porcelain	1972	Kasmir	masterpiece china 1969
Creole	earthenware	1973	Floral	earthenware	1971	Kiku Blue	
Crinoline	masterpiece china	1942	Floral Art Ware	catalina	1940	(sketches)	earthenware 1979
Crinoline	masterpiece china	1972	Floral Dance			Kiku Green	
Crown Jewel	masterpiece china	1959	(Floral Suite line)	sculptures	1981	(sketches)	earthenware 1979
Cypress	franciscan	1962	Floral Sculptures	sculptures	1978	Kiku Terra Cotta	
Daffodil			Floral Suite line	sculptures	1981	(sketches)	earthenware 1979
(Greenhouse)	earthenware	1975	Florist Special	franciscan	1936	Laguna	masterpiece china 1941
Dahlia			Flower Pots			Lamp Bases	special 1937
(Peach blush)			& Saucers	tropico	1936	Larami	stoneware 1971
Floral Sculptures	sculptures	1978	Flower Song			Larchmont	masterpiece china 1942
Dainty Bess	masterpiece china	1941	(Floral Suite line)	sculptures	1981	Lariat	ind. stoneware 1972
Daisy	franciscan	1960	Forget-Me-Not	earthenware	1978	Larkspur	franciscan 1958
Daisy Wreath	earthenware	1975	Franciscan			Lattice (Wicker	
Dawn	masterpiece china	1954	Stoneware line	stoneware	1983	Weave in White)	earthenware 1979
Debut (coupe)	masterpiece china	1958	Franciscan Tile	tile (special)	1983	Lattitudes line	earthenware 1979
Del Mar Table Ware	franciscan	1937	Fremont	masterpiece china	1942	Lilly (sketches)	earthenware 1979
Del Monte	masterpiece china	1941	French Floral	earthenware	1978	Limerick	ironstone 1974
Del Oro Table Ware	franciscan	1937	Fresh Fruit	earthenware	1980	Lorraine Green	masterpiece china 1946
Del Rey Shape	masterpiece china	1946	Fruit (1400 line)	franciscan	1948	Lorraine Grey	masterpiece china 1947
Del Rio	masterpiece china	1956	Fruit (2200 line)	franciscan	1963	Lorraine Maroon	masterpiece china 1946
Denmark	english ironstone	1982	Fruit Basket	english ironstone	1983	Lotus (Topaz blush)	
Desert Blossom	masterpiece china	1942	Fruit Table Ware	franciscan	1938	Floral Sculptures	sculptures 1978
Desert Rose	franciscan	1941	Fuchia	masterpiece china	1946	Lovebird	stoneware 1983
Discovery			Gabrielle	masterpiece china	1969	Lucerne	cosmopolitan 1959
(new name)	family china	1965	Garden Party	earthenware	1974	Madeira	earthenware 1967
Dogwood	earthenware	1975	Garden Ware	tropico	1934	Madrigal	masterpiece china 1973
Domino Black	masterpiece china	1948	Garland	earthenware	1967	Magnolia	masterpiece china 1952
Dotted Stripe	ind. porcelain	1972	Gingersnap	earthenware	1974	Mailibu	franciscan 1964
Dove Gey Platinum	masterpiece china	1949	Glenfield	porcelain	1961	Malaya	cosmopolitan 1959
Dove Grey Gold	masterpiece china	1948	Gold Band 101	masterpiece china	1942	Mandalay	
Duet	franciscan	1956	Gold Band 101 (E)	masterpiece china	1948	(Neptune)	masterpiece china 1973
Duotone Table			Gold Band 201	masterpiece china	1942	Mango Table Ware	franciscan 1937
Ware	catalina	1940	Gold Band 202	masterpiece china	1942	Mariposa	masterpiece china 1948
Dusty Rose	regal china	1962	Gold Band 301	masterpiece china	1941	Maroon	masterpiece china 1946
Dutch Weave	earthenware	1978	Gold Band 301 (B)	masterpiece china	1948	Maroon	
Earth Born			Gold Band 302	masterpiece china	1942	(Flambeau)	masterpiece china 1952
(Lattitudes)	earthenware	1979	Gold Leaves	masterpiece china	1957	Martinique	
Ecanto Art Ware	franciscan	1937	Gold Plate	ind. porcelain	1972	(Lattitudes)	earthenware 1979
Echo	franciscan	1954	Golden Gate	whitestone	1971	Martinique	masterpiece china 1966
Eclipse Shape	franciscan	1954	Golden Gate	whitestone	1971	Mary Jane	ironstone 1973
Eclipse White	franciscan	1954	Golden Weave	earthenware	1978	Max Shonfeld	
El Dorado	earthenware	1966	Gourmet	gourmet	1972	Art Ware	franciscan 1939
El Patio nuevo	franciscan	1935	Granada	masterpiece china	1950	Maypole	earthenware 1974
El Patio Table Ware	franciscan	1934	Gray Wave	ind. porcelain	1972	Meadow Rose	earthenware 1977
Elsinore	masterpiece china	1946	Greenhouse	earthenware	1975	Medallion	family china 1962
Emerald Green	masterpiece china	1946	Hacienda	franciscan	1964	Medallion Plate	masterpiece china 1970
Emerald Isle	discovery	1965	Hacienda (green)	franciscan	1965	Melrose	porcelain 1961
Encanto Dawn	masterpiece china	unknown	Happenstance	whitestone	1971	Merced Shape	masterpiece china 1940
Encanto Rose	masterpiece china	1954	Happy Talk	whitestone	1959	Merry go Round	whitestone 1959
Encanto Shape	masterpiece china	1948	Hawaii	whitestone	1967	Merry Mint	whitestone 1964
Encino Shape	masterpiece china	1949	Ilawthorne Table			Mesa	masterpiece china 1950
Encore	masterpiece china	1956	Ware	franciscan	1938	Mesa	stoneware 1983
English Rock			Honeydew	earthenware	1976	Metropolitan	
Roses	earthenware	1978	Hotel Ware (1000)	franciscan	1938	Service	franciscan 1940
Erica	english ironstone	1982	Huntington 401	masterpiece china	1948	Midnight Mist	masterpiece china 1966
Fallbrook	ironstone	1975	Huntington Rose	masterpiece china	1955	Midwinter Line	stoneware england 1987
Family china China	family china	1958	Indian Summer	family china	1958	Millbrook	ironstone 1970
Fan Shell			Indigo	masterpiece china	1970	Minaret	masterpiece china 1973
(Sea Sculptures)	sculptures	1978	Interlude	masterpiece china	1960	Mint Weave	earthenware 1978
Fan Tan	whitestone	1961	Intrigue	earthenware	1978	Mirasol	earthenware 1975
Ferndel	franciscan	1957	It's a Breeze	whitestone	1959	Miscellaneous	
			Ivy (1500 line)	franciscan	1948	Ware	special 1934
			Jade Green	masterpiece china	1948		
			Jamoca	earthenware	1973		
			Jasper Green	masterpiece china	1948		

(Continued on page 6)

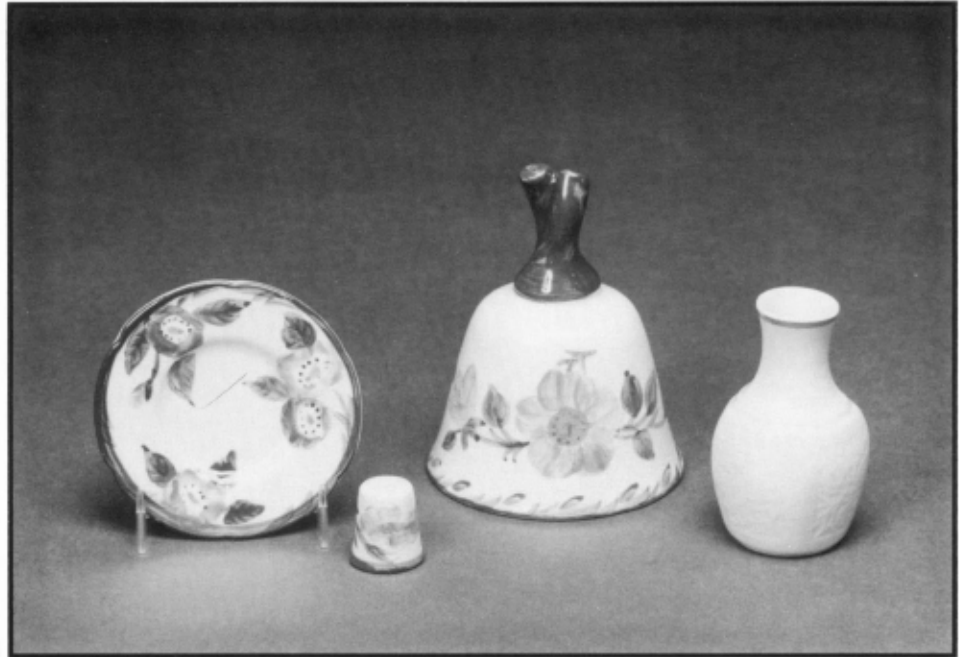
(Continued from page 5)

Monaco	masterpiece china	1968	Poppy (Greenhouse)	earthenware	1975	Silver Lining	masterpiece china	1971
Montago	earthenware	1967	Poppy Berries (Sampler line)	earthenware	1979	Silver Mist	masterpiece china	1962
Monte Cristo (Latitudes)	earthenware	1979	Porcelain (NTK Japan)	porcelain	1961	Silver Pine	masterpiece china	1955
Montebello Art Ware	catalina	1940	Prairie Flower	stoneware	1983	Silver Plate	ind. porcelain	1972
Montecito	masterpiece china	1957	Primary (Sea Sculptures)	sculptures	1978	Silver Wheat	regal china	1962
Montecito Table Ware	franciscan	1937	Primavera (Floral Suite)	sculptures	1981	Simplicity	porcelain	1961
Monterey	masterpiece china	1948	Primrose Yellow	masterpiece china	1948	Simplicity	regal china	1962
Monterey Cobalt	masterpiece china	1942	Princess Poppy (Floral Suite)	sculptures	1981	Sketches line	earthenware	1979
Moon Glow	masterpiece china	1966	Pueblo	earthenware	1972	Snow Crest	franciscan	1963
Moondance	earthenware	1972	Pueblo Table Ware	franciscan	1937	Snow Flakes (Sampler line)	earthenware	1979
Mountain Laurel	masterpiece china	1941	Quadrille	masterpiece china	1971	Snow Pine	porcelain	1961
Nassau	cosmopolitan	1959	Queen's Window (sampler)	earthenware	1979	Sommerset	masterpiece china	1959
Natchez	masterpiece china	1973	Radianee	family china	1958	Sonora	masterpiece china	1948
Nautical Art Ware	catalina	1939	Rancho Table Ware	catalina	1937	Sonora	ind. stoneware	1972
Nautilus (Sea Sculptures)	sculptures	1978	Reflections	earthenware	1983	Special Ware	ind. stoneware	1972
Newport	cosmopolitan	1959	Regalia	masterpiece china	1968	Spice	special	1934
Nightingale	masterpiece china	1966	Regency	masterpiece china	1953	Spring Song	franciscan	1961
Northridge (groundlay spray)	masterpiece china	1942	Renaissance Crown	Masterpiece china	1952	Spruce	family china	1958
Nouvelle Ebony	masterpiece china	1972	Renaissance Gold	masterpiece china	1962	St. Louis	masterpiece china	1952
Nouvelle Ivory	masterpiece china	1972	Renaissance Grey	masterpiece china	1948	St. Moritz	english ironstone	1983
Nut Tree	earthenware	1970	Renaissance Platinum	masterpiece china	1962	Star Flowers (sketches)	cosmopolitan	1960
Nuts and Bolts	ind. porcelain	1972	Reseda Art Ware	catalina	1940	Starburst	franciscan	1954
Oasis	franciscan	1955	Ridgewood	masterpiece china	1948	Starry Night	masterpiece china	1952
October	earthenware	1977	Rimrock	earthenware	1972	Stonehenge White (Midwinter)	stoneware england	1987
Olympic	masterpiece china	1950	Ring a Ling	whitestone	1964	Strathmore	english ironstone	1983
Ondine	masterpiece china	1973	Robin Egg Blue	masterpiece china	1948	Strawberry Fair	earthenware	1980
Orleans	english ironstone	1983	Rodeo	ind. stoneware	1972	Strawberry Time	earthenware	1983
Ovation Beige	sculptures	1979	Ronelay	masterpiece china	1962	Stripes	gourmet	1972
Ovation Blue	sculptures	1979	Rose (Citron blush) Floral Sculptures	sculptures	1978	Sundance	earthenware	1972
Ovation Coral	sculptures	1979	Rose Garland (Floral Suite)	sculptures	1981	Sunset	masterpiece china	1957
Ovation Desert Set	sculptures	1979	Rosette	earthenware	1980	Sweet Pea (Greenhouse)	earthenware	1975
Ovation Green	sculptures	1979	Rossmore	masterpiece china	1945	Swingtime	whitestone	1959
Ovation Pin Line	sculptures	1979	Royal Renaissance	masterpiece china	1968	Swirl	masterpiece china	1975
Overture	masterpiece china		Ruby Art Ware	franciscan	1935	Swirl Shape	masterpiece china	1961
Ovide or Redondo Shape	masterpiece china	1942	Saguaro Art Ware	catalina	1940	Sycamore	family china	1958
Padua Table Ware	franciscan	1937	Sampler Line	earthenware	1979	Tahiti	discovery	1965
Palo Alto	masterpiece china	1950	Sand Dollar (Sea Sculptures)	sculptures	1978	Tahoe	masterpiece china	1950
Papaya	earthenware	1976	Sandalwood	masterpiece china	1952	Talisman	porcelain	1961
Patrician	masterpiece china	1961	Sea Sculptures	sculptures	1977	Tangier	earthenware	1978
Paynsley	english ironstone	1983	Sea Urchin (Sea Sculptures)	sculptures	1978	Taos	stoneware	1971
Peacock Green	masterpiece china	1946	Sequoia	stoneware	1971	Tapestry	masterpiece china	1959
Peacock Plate	masterpiece china	1970	Shady Lane	earthenware	1978	Tara	cosmopolitan	1959
Pebble Beach	earthenware	1969	Shady Lane (Latitudes)	earthenware	1979	Teak	masterpiece china	1952
Pepper Poppy	earthenware	1978	Shalimar	masterpiece china	1973	Terra Cotta	discovery	1965
Petalpoint	masterpiece china	1972	Shasta	masterpiece china	1942	Terra Cotta Specials	catalina	1937
Petals & Pods	whitestone	1971	Sierra	masterpiece china	1950	Thisledown Children's Set		
Pickwick	whitestone	1965	Sierra	stoneware	1983	Thisledown Children's Set	sculptures	1979
Picnic	earthenware	1973	Sierra Sand	franciscan	1963	Thisledown Children's Set (girl's set)	sculptures	1979
Pillowtalk	ironstone	1975	Silk Ribbons (sketches)	earthenware	1979	Tiempo	franciscan	1948
Pink a Dilly	whitestone	1959	Silkstone	stoneware	1983	Tiger Flower Table Ware	franciscan	1937
Pink Vista	english ironstone	1983	Silver City Special	special	1939	Toffee	earthenware	1976
Plain White	ind. porcelain	1972				Topaz	discovery	1965
Platina	porcelain	1961				Trinidad (Latitudes)	earthenware	1979
Platinum Band (E)	masterpiece china	1948				Trinon	cosmopolitan	1959
Platinum Band 606	masterpiece china	1948				Trio	franciscan	1954
Platinum Swirl	regal china	1962						
Polynesia	earthenware	1978						
Polynesian Art Ware	franciscan	1942						
Pomegranate	franciscan	1954						

(Continued on page 11)

Franciscan For The Franklin and Danbury Mints

Franciscan manufactured a bell for Danbury Mint, a Thimble and a small Plate 3-1/4" in diameter for the Franklin Mint, and a Vase, probably made for the Franklin Mint. Also, there is a very small box maybe 1-1/2" in diameter that is marked Franciscan "made in England." Companies such as the Danbury Mint and the Franklin Mint approached Franciscan to manufacture items for their collectable lines. The bell was included in "World Famous Ceramic Houses" for Danbury Mint. The green of the handle is a special color for the collection and not the color of Desert Rose. The rest of the bell is decorated the same as Desert Rose. The interior of the bell is marked "Made especially for the Danbury Mint." The Thimble is marked with only an "F," however it was found with the original brochure introducing it as part of the 1980 Franklin Mint collection "Thimbles of the World's Greatest Porcelain Houses." The colors of the thimble are pink, rust and yellow with chartreuse and green leaves with the bottom of the thimble lined with chartreuse. The small plate was in the 1982 Franklin Mint collection "Miniature Plates of the World's Great Porcelain Houses," rimmed in a dark green with pink and scarlet flowers and dark green leaves. It is marked "A Hand Decorated Classic by Franciscan U.S.A." The small vase is the classic white background with a gold rim. The mark is the mission with the three bells (used by Franciscan early 1974 to 1975 with Franciscan Made in U.S.A.) The "F" in Franciscan is the "flying F" which was used on the word Franciscan in 1975. China production ceased in 1977, so this had to be produced prior to 1977 and no earlier than 1974. However, since no brochure has been reported, no exact date or distributor can be attributed. These items are examples of the 1970 trend of instant collectibles. Marketed in magazines, the promise that these treasures will be someday be worth more was often just a hollow promise. Now to the surprise of many, the Franciscan



collectibles are now in demand and the prices only seem to go up. Prices range from \$45-75 for the Bell, \$45-125 for the Thimble, \$45-95 for the Plate, and \$65-125 for the Vase. The thimble thus far has been the hardest to find, and is quite scarce due to thimble collectors.

What's Hot and What's Not

El Patio is not while Desert Rose is. All of the patterns are desired at different times. The hand-painted embossed lines such as Desert Rose, Ivy, and Apple are always favorites. The market has really taken off, and yet prices seem to be stable at this time. A Desert Rose cookie jar has been \$225 for the last five years. Certain items have become rarer and hence more expensive. The covered boxes, toast cover, are going up in Desert Rose. Ivy is a price leader since it was never manufactured in the quantities that Desert Rose and Apple were. Ivy was the poor stepchild of the famous two.

El Patio has always had its fit and starts. This is an area that demands collecting. A sleeper soon to awaken. However, some sleepers are best left asleep. A great example is the 70's patterns Madiera and Hacienda. I always recommend to store it until the 70's come back. We haven't seen the last of avocado or harvest gold.

But the word to the wise, is to collect what you like. I have set many relatives up with Hacienda and Madiera. Like all Franciscan and Gladding McBean products - they were meant to last. Now, don't hoard the El Patio. Start a new set today!

George T. James, Designer



Introduced in 1954, Contours, both the shape and the decals were designed by George James. Other designs by George James include the Eclipse Shape (Starburst, Duet, Oasis), the Oasis decal, the Flair Shape (Autumn, Echo, and others), Whitestone ware (Cloud Nine, etc.), and the Hacienda Shape (Hacienda Green, Hacienda, Malibu, Tulip, etc.), as well as Discovery and Masterpiece China.

Born in Lowell, Massachusetts, George James graduated in Industrial Ceramic Design from the Alfred School of Clayworking. Self-described as having a "Bauhaus" attitude, George James was quoted in the *Interpace Quarterly* (1971) "If you don't have design excitement in the beginning, you won't have anything in the end - including commercial success." George James started at Gladding McBean as a control engineer for 2 years going on to design many of the familiar shapes and decals that are appreciated today for their great design.

When George James designed the Eclipse shape, he was told by Bill Mahoney to make a new plate shape "not round or square." The plate also had to be made on a jigger. Hence, the Eclipse shape was born. The shape is patented by George James. It's unique shape is made possible by the changing elevation & thickness of the plate. The factory code name for the eclipse shape was "Millie." The code name for the flair shape

was "Otto" named after Otto Lund who was a china painter from Denmark who worked for Gladding McBean. Otto Lund designed most of the Masterpiece China shapes & decals.

According to the *Los Angeles Examiner Pictorial Living*, November 13, 1955 Contours was "Suited to many moods and periods of decor is a new line of fine China designed by George T. James. the collection was designed to introduce art forms in everyday functional pieces such as vases, ash trays and servers. With a price range between \$4.50 and \$15, the collection is within reach of budget shoppers." George James' favorite pieces is the twin vase. George James was told it looked like a breath tester (see #30-33 above.) Other favorites include the 7" bottle vase (#24) which was the same shape as the contours decal, and the covered jar (#70.)

Many of the shapes are decal underglaze decorated and came in White, Dawn, Sandalwood, Grey, Black, and Green. Decorated pieces and Black command higher prices in today's collectors market. Most pieces range from \$45-225, depending on rarity, condition, and desirability.

George James today is still a free-lance designer and is enjoying the great Los Angeles sun.

FRANCISCAN SHOP

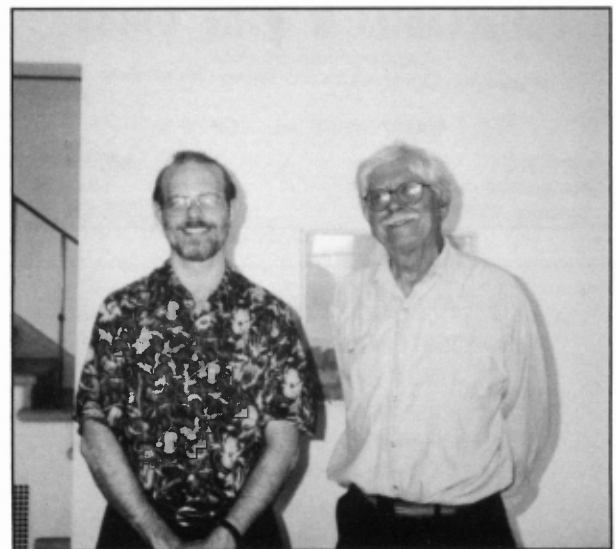
Gladding, McBean & Co.
2901 LOS FELIZ BOULEVARD
LOS ANGELES 39, CALIF.

Stock No.	Description	Plain	Decorated
CA-1	Ashtray Shell, 6"		
CA-2	Card Tray, 5½"		
CA-3	Ashtray Ribbed, 10"		*
CA-4	Ashtray Ribless, 10"		
CA-5	Ashtray Free Form, 4½"		
CA-20	Tube Vase, small, 6"		
CA-21	Tube Vase, medium, 9"		
CA-22	Tube Vase, large, 12"		
CA-24	Bottle Vase, 7"		*
CA-25	Bouquet Vase, tall, 10"		
CA-26	Footed Vase, 6¾"		
CA-30	Twin Vase, slim, 6"		*
CA-31	Twin Vase, medium, 8"		*
CA-32	Twin Vase, large, 11"		*
CA-33	Twin Vase, rounded, 4½"		*
CA-40	Centerpiece, small, 7"		
CA-42	Centerpiece, large, 14"		
CA-43	Centerpiece, deep, 12½"		
CA-44	Pedestal Bowl, 8½"		
CA-45	Elipse Bowl, small, 7"		
CA-46	Elipse Bowl, medium, 8½"		
CA-47	Elipse Bowl, large, 10½"		
CA-49	Curved Centerpiece, 16"		
CA-51	Tear Drop Tray, small, 13"		
CA-52	Tear Drop Tray, large, 17"		
CA-53	Open End Tray, small, 12"		
CA-55	Open End Tray, large, 18"		
CA-56	Triangular Bowl, small, 7½"		
CA-58	Triangular Bowl, large, 11"		
CA-70	Covered Jar, small, 5"		*
CA-71	Covered Candy Jar, 5½"		*
CA-73	Covered Candy Dish, 8"		*
CA-74	Dome Covered Jar, large, 9½"		*
CA-75	Covered Compote, 7"		*
CA-81	Candlestick, 5½"		*
CA-84	Pitcher, small, 8"		*
CA-85	Pitcher, large, 9½"		*
CA-90	Bottle, tall, 12½"		
CA-91	Elongated Bottle, 15"		
CA-100	Bird, 8"		*

* NOT AVAILABLE DECORATED



Contours is marked with the above mark in gold on the bottom of the piece. The number that appears at the base of the mark (not pictured) is the number of the piece. See the table to the left for the factory assigned number and piece description. If the piece is not marked but is a Contours shape, it was not marketed as Contours. All Contours is marked Contours. Ashtrays #1 and #3 were made plain or in various patterns for the Franciscan Fine China Line (Masterpiece China.) Some ashtrays were not marked and were sold in the Franciscan Shop at the plant as seconds.



Pictured above George T. James (right) and James Elliot, Editor (left).

Sponsors of the Franciscan Newsletter



BLUE ROSE ANTIQUES
111 N. Tower • Centralia, WA 98531
206-736-0370

10-6, Thurs. to Sun. or by appointment or chance.

CENTRALIA SQUARE #30
DUFFY'S DECORATORS MALL #29
BIG FOUR, LONGVIEW

Lou Hamburg, Owner
Robb Berry, Associate



FRANCISCAN DINNERWARE
MATCHING SERVICE

MAIL ORDER ONLY

323 E. MATILUA, SUITE 112
OJAI, CA 93023

SELL

BUY

Discontinued Patterns Bought and Sold

- Castleton
- Coalport
- Franciscan
- Flintridge
- Gorham
- Lenox
- Minton
- Pickard
- Royal Copenhagen
- Royal Crown Derby
- Royal Doulton
- Royal Worcester
- Spode
- Wedgwood
- * Johnson Brothers



414-272-8880

219 N. Milwaukee St., Milwaukee, WI 53202

FIESTA
HARLEQUIN
RIVIERA
OTHER HLC PATTERNS



FRANCISCAN
LURAY
RUSSEL WRIGHT
METLOX
VETOSA

FIESTA PLUS
MICK & LORNA CHASE
380 HAWKINS CRAWFORD RD.
COOKEVILLE, TN 38501

BUY

(615) 372-8333

SELL



White's
Collectables & Fine China

COLLECTORS PLATES
NEW AND DISCONTINUED CHINA PATTERNS

GARRY WHITE Mon. - Sat. 10-5

616 E. First
P.O. Box 680
Newberg, OR 97132

(503) 538-7421
1-223-5437
FAX (503) 538-6886

Elliot's

20th Century California Pottery

Always Open Noon to 3:00, Wednesday thru Saturday

And By Chance or Appointment

(206) 527-7038

Mailorders welcome, lists for sale accepted. Specializing in
Franciscan Ware and Gladding McBean.

James Elliot, Proprietor

Reba's Classic Ceramics

Main Store Location Open Everyday

Inside the Antique Mall

222 Westlake Ave. N.

Seattle, WA 98109

(206) 628-3117

Phone and Mail requests welcome

Reba Schneider

(206) 622-2459

Franciscan

Metlox

Vernon

Red Wing

Russel Wright

Winfield

Stangl

HLC

TST

Blue Ridge

Western

THE CALIFORNIA CONNECTION

*Specializing In American Dinnerware
40'S, 50'S And 60'S*

Owner: Carl

1716 Westheimer

Houston, Texas 77098

Bus. (713) 529-8340

Res. (713) 521-9661

Buy And Sell

Collector's Want/For Sale Ads

Wanted: Duet; 5 cereal bowls, 7 fruit bowls, 7 salad plates (8"). Also butter dish, medium platter, and all unusual pieces. Patsy Barlow, Rt 8, Box 793, Joplin, MO 64804 (417)781-9254.

For Sale: Desert Rose oval covered box \$250, heart-shaped box \$195, heart shaped dish \$95, round covered box \$175, ginger jar & cover \$225, tall salt & pepper \$85, 2 demi-cups \$30. October 2 napkin rings \$20ea, large rectangular baking dish, minor nick \$50. Send your Franciscan want lists - I search, all lists are kept on file, and these customers given first chance to buy BEFORE I advertise! Wanted for my collection: California Poppy tea pot, butter dish, berry and cereal bowls. Glad to trade Franciscan. Michael Krumme, PO Box 5542, Santa Monica, CA 90409-5542 (213) 936-4214.

Wanted: Silver Pine (see vol. 2!), any pieces except the basic 5 piece place setting. Also Del Mar: salad plates, soup bowls, mugs, pitcher, coffee pot, relish, med platter, sauce boat, butter-dish, chop plate and side salad. At reasonable prices, please. Roy Eddy, 145 4th Ave #8E, NY, Ny 10003 or E-mail to MXW60A@Prodigy.com.

For Sale: Apple - 72 pieces - private party - all in great condition \$700 - Ruth L. Paxson PO Box 20068, Sedona, Arizona 86341 (602)284-1725

Wanted: Gladding McBean & Franciscan brochures, factory memorabilia for research. Also brochures, dealer signs from Flintridge china in Pasadena and Koalena china, made in California. Always looking for the unusual in Franciscan and Gladding Mcbean, either pictures or for sale. Copies welcomed. James Elliot 8412 - 5th Ave NE, Seattle, WA 98115 (206)527-7038.



We Replace The Irreplaceable.

As the world's largest supplier of discontinued china, crystal, and flatware, Replacements, Ltd. is **THE** place to call to find over 3,000,000 pieces of inventory in over 58,000 patterns. Call today for a **FREE** listing of the pieces available in your pattern.

REPLACEMENTS, LTD.

China, Crystal & Flatware (obsolete, inactive, and active)

Call Toll Free 8 am to 10 pm EST: **1-800-REPLACE**

(1-800-737-5223)
1089 Knox Road, Dept. FY, PO Box 26029, Greensboro, NC 27420

any other pattern/line.

In 1980, the porringer was added to the Desert Rose line and was available in the boxed children's set with the 7oz mug and coupe desert plate. Also added was the oval egg box to the Desert Rose line. Added in 1983 to the Desert Rose line were the hurricane lamp and the low compote. To the Desert Rose and Apple lines were added the square ashtray, round box, ginger jar, oval candy dish, round fluted trivet, round tile, small jug, piggy bank, and metal tea kettle. To Apple were added the tea canister (already offered earlier in Desert Rose) and marmalade (the apple marmalade.)

However, has anyone seen the Apple candy dish, the Apple & Desert Rose round tiles (not the fluted trivet). Send a picture!

(Continued from page 6)

Tropico Ware	tropico	1935
Tulip (England)	earthenware	1986
Tulip time	franciscan	1963
Twice Nice	whitestone	1959
Twilight Rose	earthenware	1983
Valencia	cosmopolitan	1959
Victoria Service	franciscan	1940
Viking	english ironstone	1983
Walden	whitestone	1965
Waterfall	earthenware	1978
Wedding Band	regal china	1962
Westwood	masterpiece china	1942
Wheat		
(see Franciscan		
Wheat)		
Whirl a Gig	whitestone	1960
Whitestone Ware		
(NTK Japan)	whitestone	1959
Wild Daisy	earthenware	1978
Wild flower Table		
Ware	franciscan	1942
Wild Oats		
(Midwinter)	stoneware england	1987
Willow	masterpiece china	1952
Willow Bouquet	masterpiece china	1954
Willow Table Ware	franciscan	1937
Wilshire	masterpiece china	1942
Wind Flowers		
(sampler)	earthenware	1979
Winsome	family china	1958
Winter Bouquet	masterpiece china	1954
Wishmaker		
Table Ware	franciscan	1941
Woodlore	franciscan	1954
Woodside	masterpiece china	1941
Wrightwood	masterpiece china	1975
Yankee Doodle	ironstone	1973
Yellow Bouquet	ironstone	1970
Yellow Zebra	ind. porcelain	1972
Yuma	stoneware	1971
Zanzibar	earthenware	1971
Zinnia	earthenware	1967

note: ind. is the abbreviation for independence.

(Continued from page 1)

to Wedgwood, new pieces were added in 1979. To the Franciscan Classic Gifts line which was changed to Franciscan Giftware, Wedgwood added thimbles and napkin rings to the Apple, October, Forget-me-not and Desert Rose lines. To the Desert Rose line were added a bell, heart-shaped box, heart-shaped tray, and tea canister & lid. They were not available in

Franciscan Ware
in Famous
OASIS

Use this pamphlet as a gift-guide for your family... because Oasis is on open stock pattern, which means that its handsome shapes may be purchased separately, as well as complete sets.

And remember that each of these open stock items is color-sealed, safe in your oven and safe in your dishwasher!

Franciscan Oasis was introduced in 1955. Starburst (1954), Duet (1956) and Eclipse White 1954 were also offered in the pieces shown in this brochure. The shape design was called "Eclipse" and was designed and patented by George James. The hardest to find items are the canisters, candleholders (no decal), and the covered individual ramekins. Eclipse White is the Eclipse shape without decals applied. It is very scarce since it was discontinued shortly after being introduced. Prices for Duet are 30% lower than Oasis or Starburst with Eclipse White 20% more. Many people call Starburst "Atom," which indeed it does look like atoms.

Franciscan Ware
OASIS

OASIS

*here are the blues
of an inland sea, cross-stitched
against a white sand background,
framed by the compelling,
contemporary shapes of famous
Franciscan Ware.*

We, at Franciscan, feel justly proud of bringing contemporary art into the dinnerware picture with the new Oasis . . . for, like the best of modern design, this fine line pattern has an adaptability that makes it doubly welcome in your home!

Combine it with blue for a quiet breakfast . . . with pink for a feminine luncheon . . . with white for a breathtaking banquet . . . or with a natural wood table and accessories for a bountiful buffet!

It beckons to every appetite, refreshes every mood.

For the most inviting table in town . . . choose Oasis in famous Franciscan Ware.

Model No.	Description	Price
1804	12" x 18" Oval Platter	\$1.25
1805	12" x 18" Oval Platter	\$1.25
1806	12" x 18" Oval Platter	\$1.25
1807	12" x 18" Oval Platter	\$1.25
1808	12" x 18" Oval Platter	\$1.25
1809	12" x 18" Oval Platter	\$1.25
1810	12" x 18" Oval Platter	\$1.25
1811	12" x 18" Oval Platter	\$1.25
1812	12" x 18" Oval Platter	\$1.25
1813	12" x 18" Oval Platter	\$1.25
1814	12" x 18" Oval Platter	\$1.25
1815	12" x 18" Oval Platter	\$1.25
1816	12" x 18" Oval Platter	\$1.25
1817	12" x 18" Oval Platter	\$1.25
1818	12" x 18" Oval Platter	\$1.25
1819	12" x 18" Oval Platter	\$1.25
1820	12" x 18" Oval Platter	\$1.25
1821	12" x 18" Oval Platter	\$1.25
1822	12" x 18" Oval Platter	\$1.25
1823	12" x 18" Oval Platter	\$1.25
1824	12" x 18" Oval Platter	\$1.25
1825	12" x 18" Oval Platter	\$1.25
1826	12" x 18" Oval Platter	\$1.25
1827	12" x 18" Oval Platter	\$1.25
1828	12" x 18" Oval Platter	\$1.25
1829	12" x 18" Oval Platter	\$1.25
1830	12" x 18" Oval Platter	\$1.25
1831	12" x 18" Oval Platter	\$1.25
1832	12" x 18" Oval Platter	\$1.25
1833	12" x 18" Oval Platter	\$1.25
1834	12" x 18" Oval Platter	\$1.25
1835	12" x 18" Oval Platter	\$1.25
1836	12" x 18" Oval Platter	\$1.25
1837	12" x 18" Oval Platter	\$1.25
1838	12" x 18" Oval Platter	\$1.25
1839	12" x 18" Oval Platter	\$1.25
1840	12" x 18" Oval Platter	\$1.25
1841	12" x 18" Oval Platter	\$1.25
1842	12" x 18" Oval Platter	\$1.25
1843	12" x 18" Oval Platter	\$1.25
1844	12" x 18" Oval Platter	\$1.25
1845	12" x 18" Oval Platter	\$1.25
1846	12" x 18" Oval Platter	\$1.25
1847	12" x 18" Oval Platter	\$1.25
1848	12" x 18" Oval Platter	\$1.25
1849	12" x 18" Oval Platter	\$1.25
1850	12" x 18" Oval Platter	\$1.25
1851	12" x 18" Oval Platter	\$1.25
1852	12" x 18" Oval Platter	\$1.25
1853	12" x 18" Oval Platter	\$1.25
1854	12" x 18" Oval Platter	\$1.25
1855	12" x 18" Oval Platter	\$1.25
1856	12" x 18" Oval Platter	\$1.25
1857	12" x 18" Oval Platter	\$1.25
1858	12" x 18" Oval Platter	\$1.25
1859	12" x 18" Oval Platter	\$1.25
1860	12" x 18" Oval Platter	\$1.25
1861	12" x 18" Oval Platter	\$1.25
1862	12" x 18" Oval Platter	\$1.25
1863	12" x 18" Oval Platter	\$1.25
1864	12" x 18" Oval Platter	\$1.25
1865	12" x 18" Oval Platter	\$1.25
1866	12" x 18" Oval Platter	\$1.25
1867	12" x 18" Oval Platter	\$1.25
1868	12" x 18" Oval Platter	\$1.25
1869	12" x 18" Oval Platter	\$1.25
1870	12" x 18" Oval Platter	\$1.25
1871	12" x 18" Oval Platter	\$1.25
1872	12" x 18" Oval Platter	\$1.25
1873	12" x 18" Oval Platter	\$1.25
1874	12" x 18" Oval Platter	\$1.25
1875	12" x 18" Oval Platter	\$1.25
1876	12" x 18" Oval Platter	\$1.25
1877	12" x 18" Oval Platter	\$1.25
1878	12" x 18" Oval Platter	\$1.25
1879	12" x 18" Oval Platter	\$1.25
1880	12" x 18" Oval Platter	\$1.25
1881	12" x 18" Oval Platter	\$1.25
1882	12" x 18" Oval Platter	\$1.25
1883	12" x 18" Oval Platter	\$1.25
1884	12" x 18" Oval Platter	\$1.25
1885	12" x 18" Oval Platter	\$1.25
1886	12" x 18" Oval Platter	\$1.25
1887	12" x 18" Oval Platter	\$1.25
1888	12" x 18" Oval Platter	\$1.25
1889	12" x 18" Oval Platter	\$1.25
1890	12" x 18" Oval Platter	\$1.25
1891	12" x 18" Oval Platter	\$1.25
1892	12" x 18" Oval Platter	\$1.25
1893	12" x 18" Oval Platter	\$1.25
1894	12" x 18" Oval Platter	\$1.25
1895	12" x 18" Oval Platter	\$1.25
1896	12" x 18" Oval Platter	\$1.25
1897	12" x 18" Oval Platter	\$1.25
1898	12" x 18" Oval Platter	\$1.25
1899	12" x 18" Oval Platter	\$1.25
1900	12" x 18" Oval Platter	\$1.25
1901	12" x 18" Oval Platter	\$1.25
1902	12" x 18" Oval Platter	\$1.25
1903	12" x 18" Oval Platter	\$1.25
1904	12" x 18" Oval Platter	\$1.25
1905	12" x 18" Oval Platter	\$1.25
1906	12" x 18" Oval Platter	\$1.25
1907	12" x 18" Oval Platter	\$1.25
1908	12" x 18" Oval Platter	\$1.25
1909	12" x 18" Oval Platter	\$1.25
1910	12" x 18" Oval Platter	\$1.25
1911	12" x 18" Oval Platter	\$1.25
1912	12" x 18" Oval Platter	\$1.25
1913	12" x 18" Oval Platter	\$1.25
1914	12" x 18" Oval Platter	\$1.25
1915	12" x 18" Oval Platter	\$1.25
1916	12" x 18" Oval Platter	\$1.25
1917	12" x 18" Oval Platter	\$1.25
1918	12" x 18" Oval Platter	\$1.25
1919	12" x 18" Oval Platter	\$1.25
1920	12" x 18" Oval Platter	\$1.25
1921	12" x 18" Oval Platter	\$1.25
1922	12" x 18" Oval Platter	\$1.25
1923	12" x 18" Oval Platter	\$1.25
1924	12" x 18" Oval Platter	\$1.25
1925	12" x 18" Oval Platter	\$1.25
1926	12" x 18" Oval Platter	\$1.25
1927	12" x 18" Oval Platter	\$1.25
1928	12" x 18" Oval Platter	\$1.25
1929	12" x 18" Oval Platter	\$1.25
1930	12" x 18" Oval Platter	\$1.25
1931	12" x 18" Oval Platter	\$1.25
1932	12" x 18" Oval Platter	\$1.25
1933	12" x 18" Oval Platter	\$1.25
1934	12" x 18" Oval Platter	\$1.25
1935	12" x 18" Oval Platter	\$1.25
1936	12" x 18" Oval Platter	\$1.25
1937	12" x 18" Oval Platter	\$1.25
1938	12" x 18" Oval Platter	\$1.25
1939	12" x 18" Oval Platter	\$1.25
1940	12" x 18" Oval Platter	\$1.25
1941	12" x 18" Oval Platter	\$1.25
1942	12" x 18" Oval Platter	\$1.25
1943	12" x 18" Oval Platter	\$1.25
1944	12" x 18" Oval Platter	\$1.25
1945	12" x 18" Oval Platter	\$1.25
1946	12" x 18" Oval Platter	\$1.25
1947	12" x 18" Oval Platter	\$1.25
1948	12" x 18" Oval Platter	\$1.25
1949	12" x 18" Oval Platter	\$1.25
1950	12" x 18" Oval Platter	\$1.25
1951	12" x 18" Oval Platter	\$1.25
1952	12" x 18" Oval Platter	\$1.25
1953	12" x 18" Oval Platter	\$1.25
1954	12" x 18" Oval Platter	\$1.25
1955	12" x 18" Oval Platter	\$1.25
1956	12" x 18" Oval Platter	\$1.25
1957	12" x 18" Oval Platter	\$1.25
1958	12" x 18" Oval Platter	\$1.25
1959	12" x 18" Oval Platter	\$1.25
1960	12" x 18" Oval Platter	\$1.25
1961	12" x 18" Oval Platter	\$1.25
1962	12" x 18" Oval Platter	\$1.25
1963	12" x 18" Oval Platter	\$1.25
1964	12" x 18" Oval Platter	\$1.25
1965	12" x 18" Oval Platter	\$1.25
1966	12" x 18" Oval Platter	\$1.25
1967	12" x 18" Oval Platter	\$1.25
1968	12" x 18" Oval Platter	\$1.25
1969	12" x 18" Oval Platter	\$1.25
1970	12" x 18" Oval Platter	\$1.25
1971	12" x 18" Oval Platter	\$1.25
1972	12" x 18" Oval Platter	\$1.25
1973	12" x 18" Oval Platter	\$1.25
1974	12" x 18" Oval Platter	\$1.25
1975	12" x 18" Oval Platter	\$1.25
1976	12" x 18" Oval Platter	\$1.25
1977	12" x 18" Oval Platter	\$1.25
1978	12" x 18" Oval Platter	\$1.25
1979	12" x 18" Oval Platter	\$1.25
1980	12" x 18" Oval Platter	\$1.25
1981	12" x 18" Oval Platter	\$1.25
1982	12" x 18" Oval Platter	\$1.25
1983	12" x 18" Oval Platter	\$1.25
1984	12" x 18" Oval Platter	\$1.25
1985	12" x 18" Oval Platter	\$1.25
1986	12" x 18" Oval Platter	\$1.25
1987	12" x 18" Oval Platter	\$1.25
1988	12" x 18" Oval Platter	\$1.25
1989	12" x 18" Oval Platter	\$1.25
1990	12" x 18" Oval Platter	\$1.25
1991	12" x 18" Oval Platter	\$1.25
1992	12" x 18" Oval Platter	\$1.25
1993	12" x 18" Oval Platter	\$1.25
1994	12" x 18" Oval Platter	\$1.25
1995	12" x 18" Oval Platter	\$1.25
1996	12" x 18" Oval Platter	\$1.25
1997	12" x 18" Oval Platter	\$1.25
1998	12" x 18" Oval Platter	\$1.25
1999	12" x 18" Oval Platter	\$1.25
2000	12" x 18" Oval Platter	\$1.25